



## A guide to Careers at the Midland Academies Trust

All pupils who attend a Midland Academies Trust school have an entitlement to a Careers Education Information and Guidance programme.

All Midland Academies Trust schools support the development of each pupil through a series of planned activities and curriculum events throughout their time at school. This will enable them to access opportunities, develop their entrepreneurial skills, support their curriculum subjects and help to establish the connections there are between school and the wider world of work.

Our aim is that every pupil in every year group has a planned programme of careers activities both within school and outside of it. We use the Gatsby Benchmarks to ensure all aspects of careers provision is up to date and relevant to pupils. We work with all staff to promote skills for work across the curriculum and have on site careers advice and guidance from two qualified careers advisors.

### How do we aim to do this?

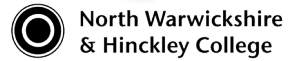
Our aim is that every pupil in every year group has a planned programme of careers activities both within school and outside of it.

We use the Gatsby Benchmarks to ensure all aspects of careers provision is up to date and relevant to pupils. We work with all staff to promote skills for work across the curriculum and have on site careers advice and guidance from two qualified careers advisors.



**Autumn 2022**

Working in partnership with NWSLC



## 'Your Future MATters'

Careers Education Information Advice & Guidance



We aim to create successful futures for all our young people so they can sustain employment and experience personal and economic success throughout their working lives.

Our vision is for every young person to be ambitious, develop skills and achieve qualifications to fulfill their potential within the world of work.

### Careers Advice for all students

We have our own Careers and Employability Manager- Debbie Partridge and additional carers Advisor Caroline Denny.

Both Careers Advisors work across the Midland Academies Trust schools to ensure all our pupils receive high quality impartial careers advice and guidance.

To book a career appointment pupils can ask their Pastoral Lead or Form Tutor who will pass this on or parents can email any queries to [careers@midlandat.co.uk](mailto:careers@midlandat.co.uk) or ring Debbie on 02476 243039



**'Career opportunities don't just happen- YOU create them'**



Debbie Partridge

Caroline Denny



Both Careers Advisors see pupils individually or in small groups and have a key focus interviewing the Year 11's getting all pupils prepared for applying to their post 16 options. Part of their role is also to track and follow up all Year 11 pupils to make sure everyone has an offer of learning by September.

Please visit our website for more information about our careers provision [www.midlandat.co.uk](http://www.midlandat.co.uk) -Our approach-MAT Careers Education.



**George Eliot  
Academy**



**Hartshill  
Academy**



**Heath Lane  
Academy**



**Nuneaton  
Academy**

## Looking forward to the rest of the academic year!

Debbie and Caroline will be working with pupils who are looking for an apprenticeship to make sure they are ready to apply to employers and that everyone has backup plans as it is really competitive to secure an employer. They will then be moving onto interviewing Year 10 pupils preparing them for the transition into Year 11. Our Careers Advisors will also be available at Year 9, 10 and 11 Parents Evenings to help advise pupils and parents.

## Did you know?

All pupils now need to stay in some form of learning until aged 18. It is important students research all the learning options available to them so that they can make an informed decision about post 16 learning.

This does not mean that pupils have to stay in school – the school leaving age has not changed.

Options available include:

- An apprenticeship
- Full-time education (College or Sixth form)
- Traineeships
- To become self-employed, employed or take a voluntary job for 20 hours or more a week. This will need to be alongside part-time education, or training for one day per week.

## Careers Curriculum 2022- 23

Year 7	Year 8	Year 9	Year 10	Year 11
1. Why is getting employment important?  2. How have jobs changed over time?  3. What does the law say about pay?  4. Life Ready, Work Ready  5. Life Ready, Work Ready / Evaluation	1. What is stereotyping in the world of work? What are your legal rights? (Employment Law) 2. Clean up your act- what does your Facebook tell an employer about you? 3. How do I get experience when I don't have any? 4. May I present myself? 5. Isn't work something you get paid for doing? 6. What GCSE subject links to careers paths? 7. What GCSE Subject link to careers paths.	1. What work skills can I obtain from my subjects in school? 2. What does STEM stand for? What are some of the jobs in STEM subjects? 3. Which subjects are needed for my chosen career path? 4. What skills and attributes do employers look for. 5. What will happen at the GCSE Pathways evening. 6. What are my Post 16 options	1. How have careers past, present and future changed? 2. What are the employment opportunities in Coventry & Warwickshire / Leicestershire. 3. What qualities and skills do I have? How do I write a personal statement 4. How do I write a CV? 5. How do I make an application? 6. How do I apply for an apprenticeship	1. What is an action plan? 2. How do I get to my action plan and what is it? 3. How can I develop my personal statement. 4. How do I apply for a job? 5. How can I add to my CV? 6. What are my next steps for my career path?

## Careers & Employability

### Career opportunities for all

Thinking about careers and having an eye on the future we believe is essential from year 7. Having a goal to achieve can be a real motivator and as such we offer a wide range of activities and events to interest pupils. These include events where we invite parents and carers to as well as some that take place in school time. Examples of these include:

- Visits to the work place to look at the changing world of work and the impact of technology in the work place.
- Employers, apprenticeship providers and further education providers visiting the school to give small group talks, assemblies or to promote open days and events to provide information and often 'hands on' experiences.
- Practice interviews- to build confidence and skills.
- Visits to local universities to help students to see the opportunities both for employment and study that are on offer.
- Careers Fairs are held in all Midland Academy Trust Schools

## Careers Facilities

All our schools now have dedicated facilities for providing individual careers advice. These are accessible to all students at break and lunchtime and after school as well as the entitlement that every Year 11 pupil has at least one careers guidance interview to support a positive destination.

The MAT Warwickshire schools have been supported by the 'Skills for Employment Grant' offered by Warwickshire County Council and have developed their careers bases where they can offer confidential advice and guidance as well as a wide range of resources designed to encourage aspirational career choices and goals.

**LET'S DO  
BUSINESS**

[www.letsdobusiness.org.uk](http://www.letsdobusiness.org.uk)

Email to use is: [careers@midlandat.co.uk](mailto:careers@midlandat.co.uk)

Password to use is **MAT Careers**

**Let's Do Business can  
improve your chances  
of getting the job of  
your dreams one day**

**What can  
Let's Do Business  
do for you?**

## Independent research on careers



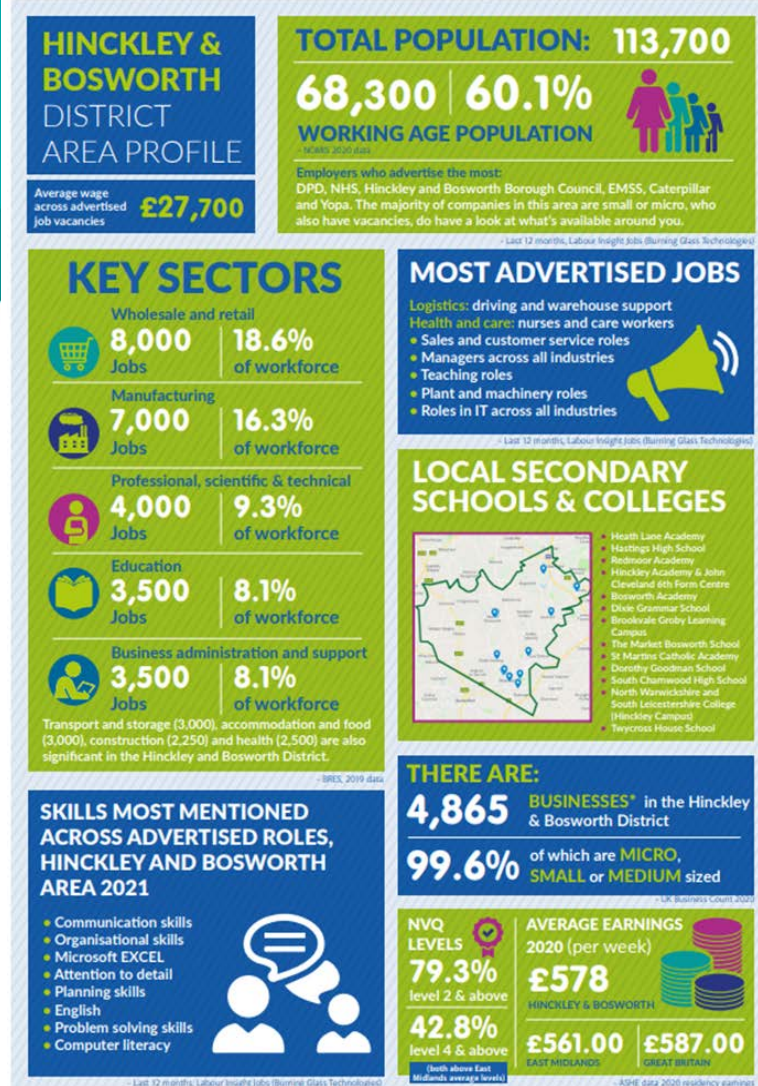
**eclips-online.co.uk** is the excellent online careers library MAT subscribes to; access is available for parents and students from home. The site covers almost every job you can think of and links to professional bodies for more information. It is also useful for students who have no clear ideas as it allows exploration of broad job areas (and there is a leaflet on careers linked to most school subjects eg 'careers with Maths'). Useful tabs include 'labour market information' giving details of current trends/salaries and 'related leaflets' - a great way to broaden horizons by exploring jobs that are similar.

**The password is: MAT Careers**



## Labour Market Information (LMI)

LMI includes information on general employment trends in our local area which comes from a range of sources. It indicates present and future employment demands helping pupils to see where future jobs and skill gaps will be. We use LMI as part of our careers curriculum to help pupils plan for their future. Shown below is the LMI data for Nuneaton and Bedworth and Hinckley and Bosworth.



## "Your GCSEs MATter"

**Gaining good GCSEs grades has never been more important.**

Pupils must study Maths and/or English if they are aged 16 to 18 and do not hold a GCSE grade 9 to 4, A\* to C (a standard pass grade) in these subjects.

Your career options in life will be severely restricted without them.

**Pupils must then do one of the following until they are 18:**

- stay in full-time education, for example at a college
- start an apprenticeship or traineeship
- spend 20 hours or more a week working or volunteering, while in part-time education or training

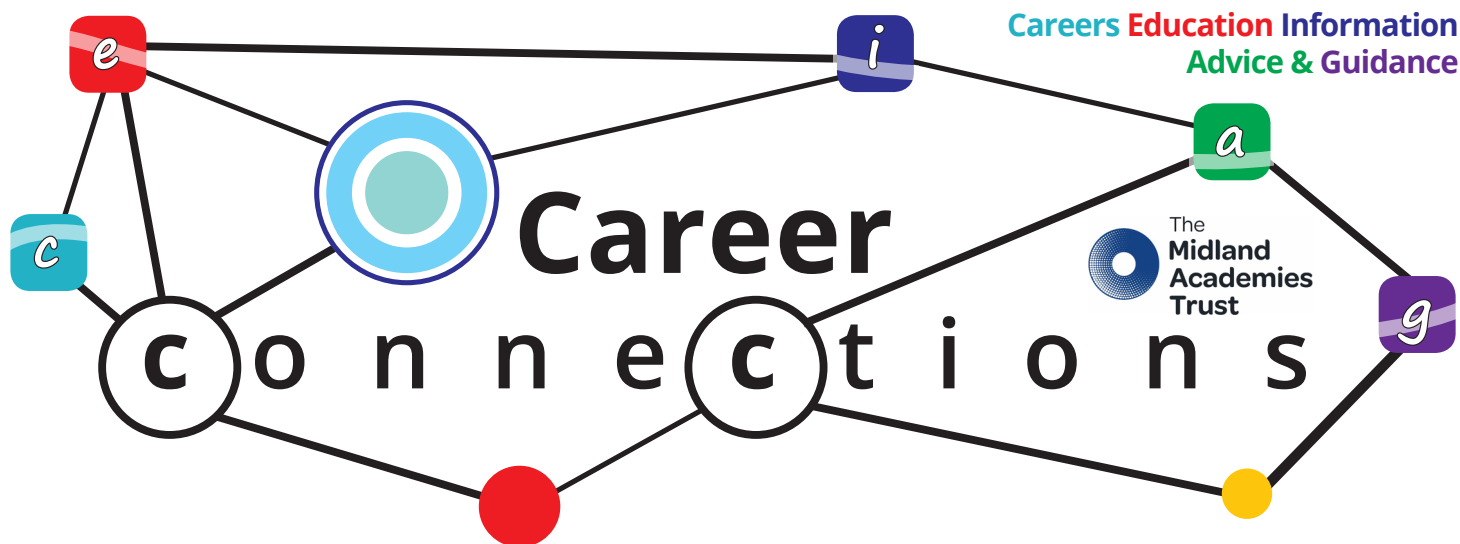
**Ofqual**

### New GCSE grading structure

New grading structure	Current grading structure
9	
8	A*
7	A
6	B
5	
4	C
3	D
2	E
1	F
	G
U	U

**GOOD PASS (DfE)**  
5 and above = top of C and above

**AWARDING**  
4 and above = bottom of C and above



This is a programme of events that run in all our schools throughout the year that provide pupils with a wide range of experiences designed to increase their work readiness skills. By the time our pupils leave school we want them to have good self-awareness, be aspirational in their career choices, resilient and able to cope in challenging situations, adaptable and most of all well informed of the local labour market demands and future employment trends. Here are some examples of the Employer Encounters we offer.

- World Skills Live Event –Birmingham NEC.
- Careers in Health Care- George Eliot Hospital.
- Careers Speed Networking
- 'Think Higher' events at Coventry and Warwick University.
- National Citizenship Service NCS- developing broader employability skills.
- Medical Mavericks - Exploring careers in Health & Medicine.
- TeenTech at MIRA Technology Centre.
- Post 16 Opportunities – talks and presentations which included North Warwickshire and South Leicestershire College, Higham Lane 6th Form, King Edwards VI Form College and Leicester City College.
- Careers Fair with representatives from over 30 Post 16, employer and apprenticeship providers from national representatives as well as from Warwickshire and Leicestershire.



## Feedback to improve what we do

We welcome feedback on all our careers programme of events from pupils teachers, employers and parents/carers.

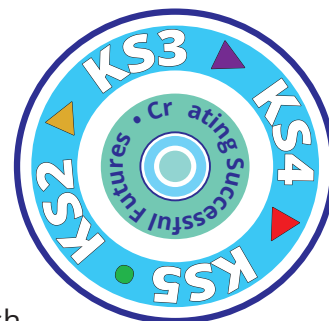
If you have any comments or feedback please email [careers@midlandat.co.uk](mailto:careers@midlandat.co.uk)

Your views are important as we continue to develop and improve our careers offer.

## Can you get involved with careers?

We are always looking to involve our parents/carers and local employers to inspire our pupils to develop their skills for employability. This could be the offer of a work place visit, assembly or speaking to a small group of pupils who are interested in the vocational area you work in. We want to inspire and encourage all our pupils to widen their aspirations and find out more about the wide variety of employment sectors.

If you are part of a company who offers apprenticeships of employment you may wish to come to one of our annual Careers Fair events. Please use the email [careers@midlandat.co.uk](mailto:careers@midlandat.co.uk)



Working in partnership with NWSLC

